

Secured by Design



Official Police Security Initiative

UPGRADE OPTION
AVAILABLE



TOTAL
Aluminium Solutions

S1 ROOF LANTERN





TOTAL
Aluminium Solutions

8 Standard Options

We fabricate 8 standard style options, in standard colours these are usually available in 3-5 working days.

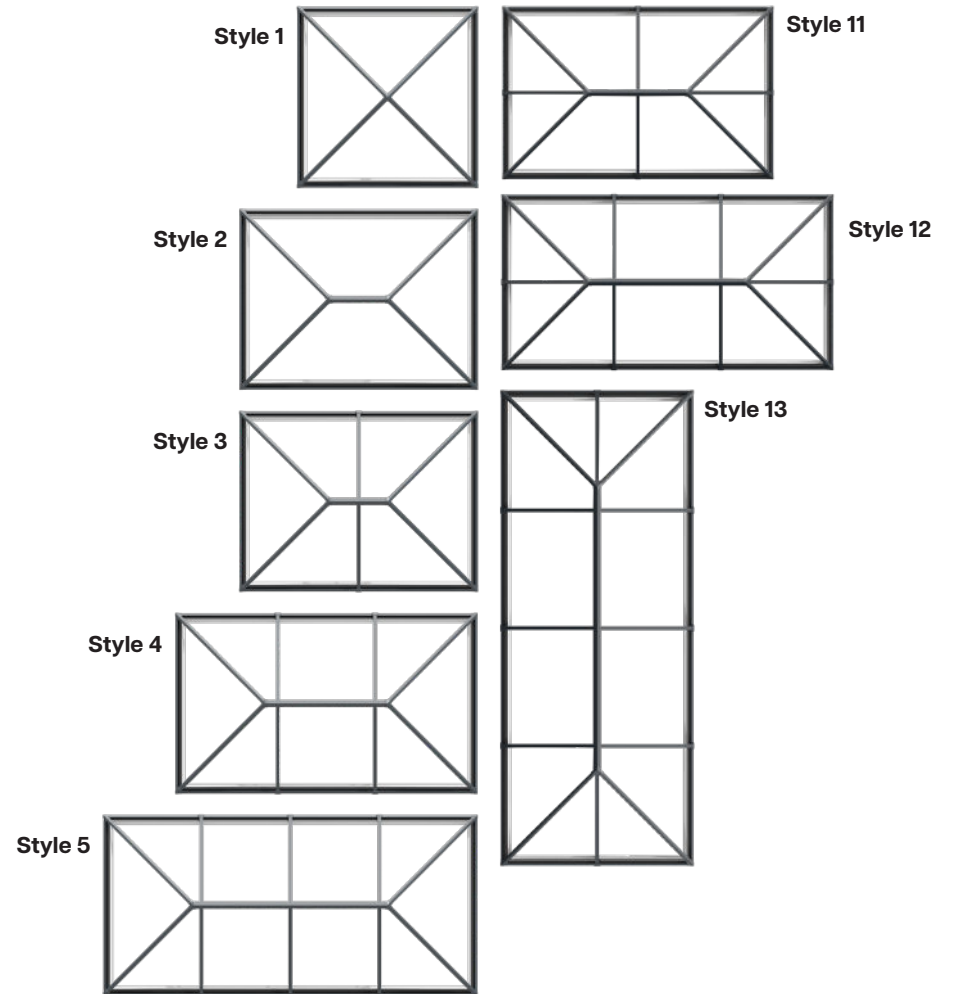
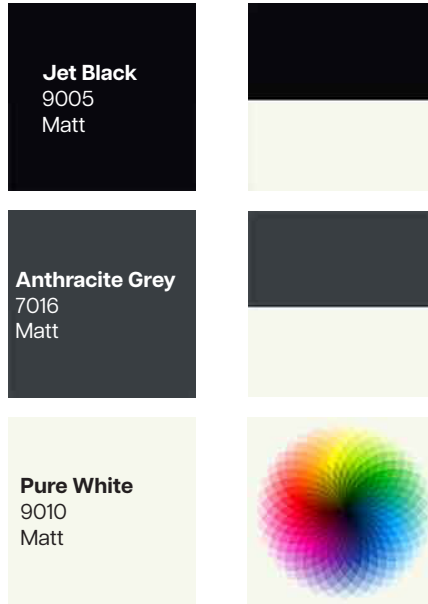
3 Standard Colour Options

All available in dual colour combinations. Standard colour options are usually available on a 3-5 working day lead time.

Bespoke colours are available to order, ask for details.



STANDARD LANTERN COLOURS - All available in dual colour combinations.



BESPOKE LANTERN COLOUR EXAMPLES

Please contact us for your requirements to discuss minimum order volumes. All available in dual colour combinations.

DISCLAIMER

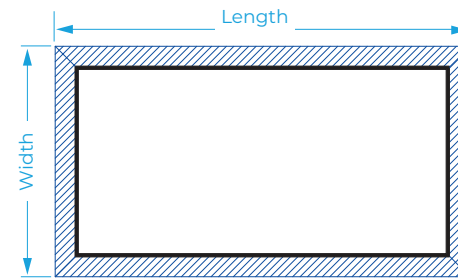
Due to the variability of manufacturing processes and the differences in the methods used to represent these colours, we cannot guarantee an exact colour match between the actual paint colour and the colour as seen on-screen or when printed. The RAL colour references are also provided as a guide only and we recommend asking to see a physical sample prior to order if required. All colours and finishes are supplied within standard tolerance ranges.

Technical information, specifications, literature and other materials are provided for illustration only, and may show and refer to product options. The accuracy of such information is not guaranteed and is subject to change without notification. The evaluation and selection of products and determining whether products are suitable for their intended use should be discussed between the end user and the installer/fabricator, as this falls outside our remit as system component manufacturer.

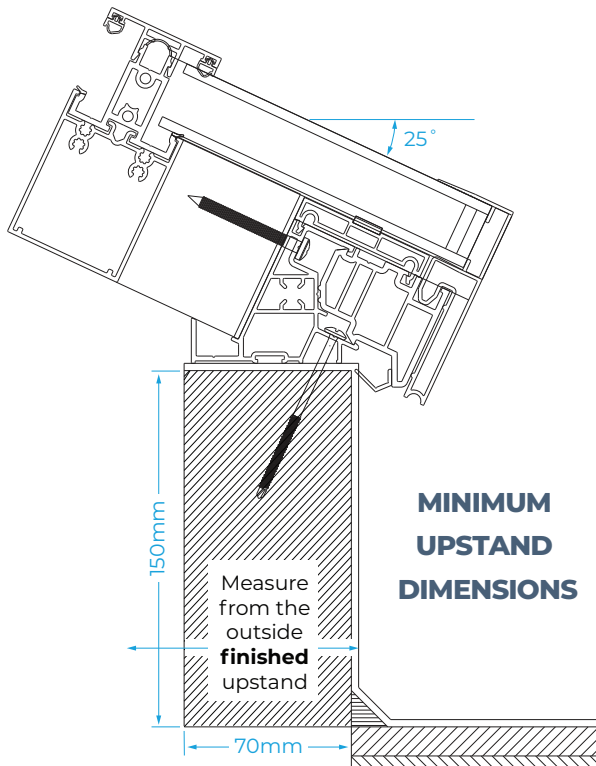


At a glance

- Max size ranges from 3.2m up to 6m
- 25°pitch
- 8 styles
- 50mm sightlines Rafter, hip, jack rafters and ridge
- Max 3.2 x 6m
- SBD option
- 1.2KN/m² snowload Covering the whole of the UK up to 200m altitude.



The lantern design assumes that the eaves beam is fully supported along all edges by a structural upstand capable of resisting the full vertical (as well as any lateral spread loads) applied by the lantern roof self-weight plus imposed snow / wind loads.



Visit www.total-as.com for more information



TOTAL
Aluminium Solutions

Patented¹ Sheerline corner joints provide structural integrity and reduce misaligned corners.

Intelligent system designs create an ultra secure lantern for added peace of mind.

Unique Thermlock[®] technology give class leading thermal performance.

Low line glazing and inline rafter cappings create the ultimate contemporary look.

Manufactured in-house in the UK, for a robust and agile supply chain you can rely on.

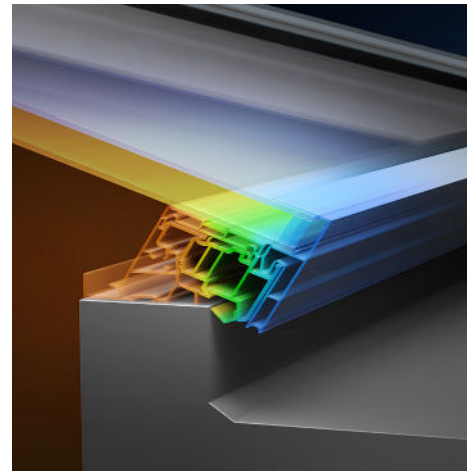


SCAN ME



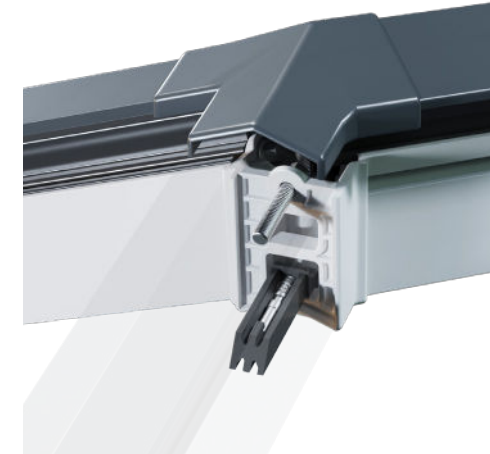
Internal Aluminium Sections

The S1 has been designed to ensure aluminium sections remain internal, preventing cold bridging and condensation issues.



Thermal Performance

Thermlock[®] multi-chamber technology used in the eaves beam, ridge and all rafter and hip bars creates an exceptionally thermally insulated lantern. With a unique co-extruded perimeter seal ensuring draughts and rain are kept safely outside, while 28mm glazing allows acoustic dampening glass to be fitted if required.



Installer Friendly

Unique hook brackets support the hip rafters during construction, simplifying fitting on site and speeding up installation. We've also designed out many common issues installers encounter and include internal rafter end caps to prevent bars marking the eaves beam during installation.

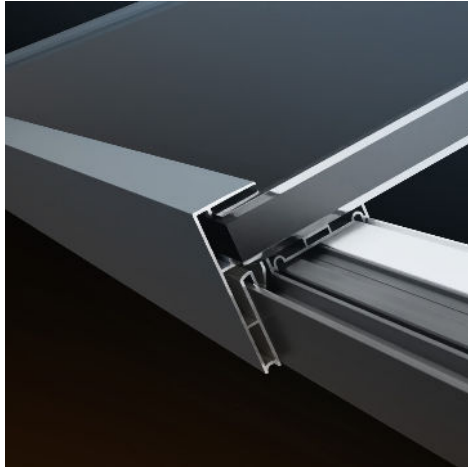
THE THERMLOCK[®]
technology inside



The S1 system combines security, thermal performance and refined looks to create the ultimate next generation aluminium lantern roof.

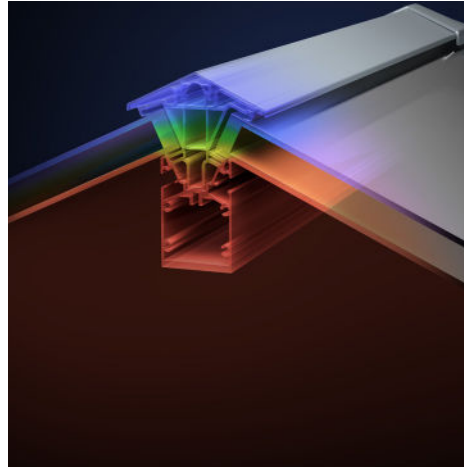
¹Subject to glass specification. ²Based on SBD's test criteria.

³Patent registration number: GB2569209 ⁴Mainstream residential roof lantern.



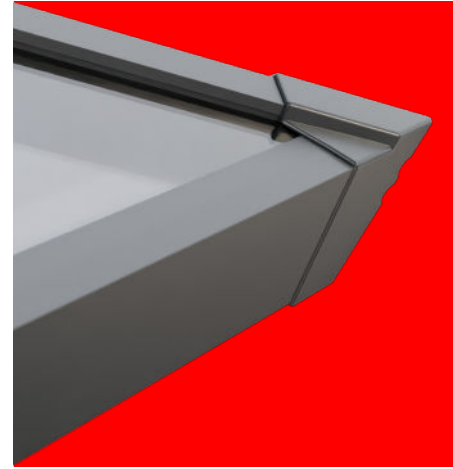
The UK's most secure lantern roof

Anti-tamper screws, enclosed anti-tamper glazing, security tape and a patent pending glass lock, alongside S1's high security ridge end, combine to make Sheerline's S1 system the UK's most secure non bonded aluminium lantern roof*.



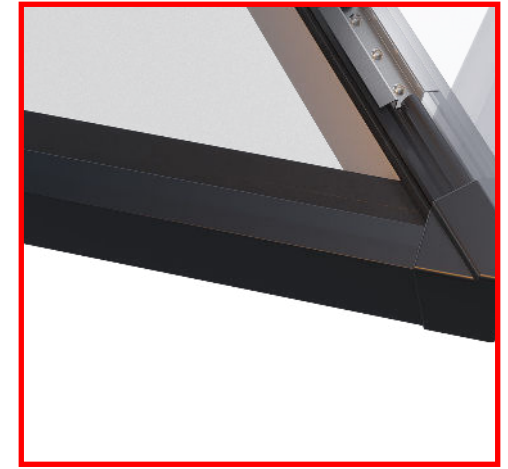
Thermlock® technology

Our next generation lantern provides exceptional thermal performance using 28mm glazing combined with Thermlock® closed-cell, insulating chambers to create class leading thermal performance, far superior to traditional polyamide thermal breaks.



Slim, ultra low line aesthetics

Careful attention has been given to style with rafter and hip top caps sitting just 8mm above the exterior glazing level. While corner and rafter end caps run perfectly in line with the perimeter of the lantern, creating a sleek and refined architectural appearance.



The UK's most secure lantern roof

The **SBD upgrade** uses security clamping plates to lock laminated glass in place, preventing lifting and removal by would-be intruders* even if rafter top caps have been removed. These stainless steel components are held firmly in place by security screws for added strength.

The S1 roof lantern delivers real benefits to homeowners in a system that is installer friendly.



Visit www.total-as.com for more information



Why choose us?

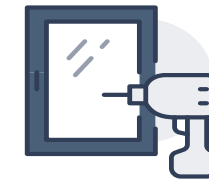


From initial contact to delivery our reception, sales, estimating, technical and after-sales teams are on hand to assist with any queries.

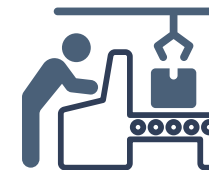


210m² Showroom housing every product we manufacture including accessory options.

Entertain your clients in our showroom.



We offer free of charge installation training on all of our products.



We have over 30,000m² of manufacturing space across two facilities. We have 5 CNC centres and over 55 staff.



Our experience and fabricating capacity allows us to complete orders in some industry leading lead times.



We only supply to trade customers ensuring we will never compete for business. We pass leads on to regular clients.



We've been trading as the same company for over 38 years and specialise in aluminium products.

From initial contact through to after sales, our knowledgeable team are on hand to answer any questions you may have.

Our recently refitted showroom is an impressive 210m² and houses an example of every product we manufacture.

Our showroom is available for all our clients to entertain potential customers, we have meeting rooms that you can use to entertain your clients with a large flat screen TV for presentations.

We can put your media or logo on the screen with advanced notice and we'll of course provide you with refreshments for your visit.

Visit www.total-as.com for more information



TOTAL
Aluminium Solutions



Get in touch:

Sales: Barry Wheeler
07436 159 289
barrywheeler@total-as.com

General Enquiries: Reception
01252 336614
info@total-as.com

Visit us:

102-120 North Lane Aldershot, Hampshire
GU12 4QN United Kingdom.
www.total-as.com

