

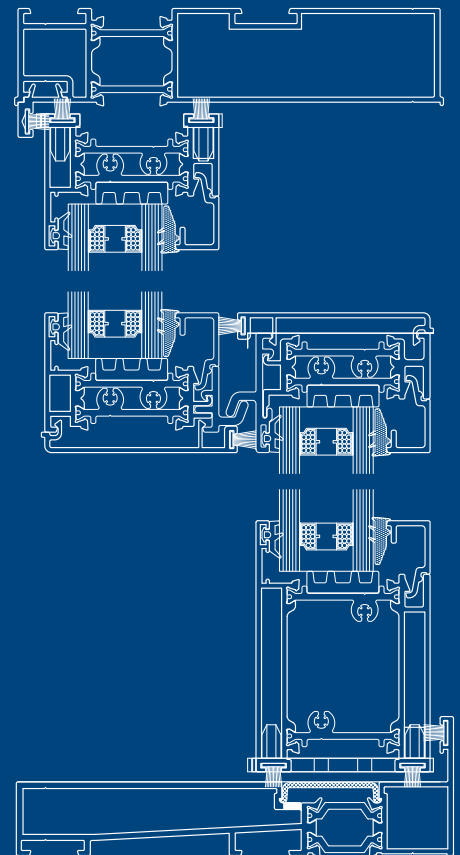


## VS600

The VS600 vertical sliding window is a brand new innovation to the Smart product range. VS600 incorporates the traditional styling of sash windows with the advantages of modern thermal aluminium profile.

- U Value 1.6W/m<sup>2</sup>K
- Window Energy Rating: C
- Document L Compliant
- Decorative sash horns available
- BS 6375 Part 1: 2009 Resistance to Weather

The images illustrate different types of suitable applications for VS600 and are not binding in detail or specification



# VS600

The VS600 vertical sliding window is a brand new innovation to the Smart product range. VS600 incorporates the traditional styling of sash windows with the advantages of modern thermal aluminium profile.

A traditional sash window may be used in heritage and conservation areas where Georgian and Victorian architecture is predominant. The ease of operation and excellent natural ventilation rates means that VS600 is also suited to high occupancy buildings.

The window offers a flush opening with no projection into or out of the building, a style of window which is frequently used in schools and hospitals.

VS600 hardware has been designed alongside the experts at Caldwell and utilises various standard hardware designs. As well as the vertical sliding sash, VS600 features a 'tilt in' operation that facilitates the cleaning of the external glass.

The system features low line glazing gasket that will accept 28mm sealed units. The system can achieve overall U Values of 1.6W/m<sup>2</sup>K and a W.E.R. B rating. VS600 windows also feature concealed drainage and a concealed coupling option.

Assembly of VS600 is optimised through square cut outer frame and sash joints which require minimal machining aiding fabrication.

## Technical Performance

**U Value** 1.6W/m<sup>2</sup>K

**WER** C

**Document L Compliant**

**Glass** 28mm

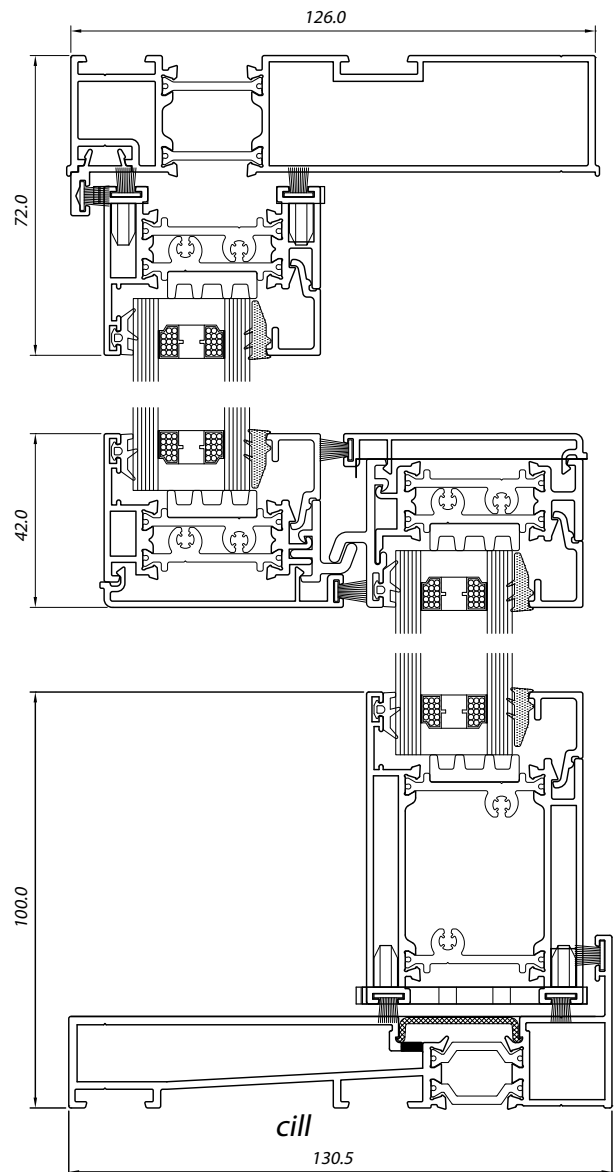
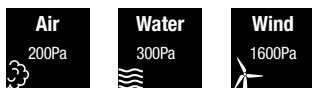
**Air** Class 5A, 200Pa

**Water** Class 7A, 300Pa

**Wind** Class A4, 1600Pa

## Finish

Single colour only



## Smart Systems Limited

Arnolds Way | Yatton | Bristol | North Somerset | BS49 4QN | UK

T +44 (0) 1934 876 100 | F +44 (0) 1934 835 169 |

W [www.smartsystems.co.uk](http://www.smartsystems.co.uk) | E [sales@smartsystems.co.uk](mailto:sales@smartsystems.co.uk)

IMS125VS.201504

The images, drawings and data shown in this brochure are for illustrative purposes only and are not binding in detail, colour or specification. We reserve the right to make changes to the product specification as technical developments dictate and without prior notice. We recommend that the user ensures that they are satisfied the product meets their requirements prior to purchase. ©Smart Systems Ltd 2014